



Deesae technology

Deesae Technology

www.Deesae.com

Product Information

DP Ladder180 Protein Marker

Size: 250 μ l \times 2

5 μ l per well for 100 applications

Storage

4°C \geq 3 months

-20°C \geq 24 months

Loading Volume

- 3 μ l or 5 μ l per loading for clear visualization during electrophoresis on 15-well or 10-well mini-gel, respectively.
- 1.5~2.5 μ l per well for general Western transferring.
- Apply more for thicker (> 1.5 mm) or larger gel.



Deesae Technology

www.Deesae.com

Description

The DP Ladder180 is a blue protein standard with 10 prestained proteins covering a wide range of molecular weights from 10 to 180 kDa in Tris-Glycine buffer (9 to 170 kDa in Bis-Tris (MOPS) buffer and Bis-Tris (MES) buffer). Proteins are covalently coupled with a blue chromophore, and two reference bands (at 25 kDa and 72 kDa, respectively) are enhanced in intensity when separated on SDS-PAGE (Tris-glycine buffer). The DP Ladder180 is designed for monitoring protein separation during SDS-polyacrylamide gel electrophoresis, verification of Western transfer efficiency on membranes (PVDF, nylon, or nitrocellulose) and for approximating the size of proteins.

The marker is supplied in gel loading buffer and is ready to use. **Do NOT heat, dilute, or add reducing agent before loading.**



Deesae technology

Deesae Technology

www.Deesae.com

Contents


Approximately 0.1~0.5 mg/ml of each protein in the buffer (20 mM Tris-phosphate, pH 7.5, 2% SDS, 0.2 mM Dithiothreitol, 3.6 M Urea, and 15% (v/v) Glycerol).

Guide for Molecular Weight Estimation (kDa)

Migration patterns of All Blue Broad Range Protein Marker in different electrophoresis conditions are

listed below:

Color	TRIS-GLYCINE	BIS-TRIS (MOPS)	BIS-TRIS (MES)
Blue	180	170	170
Blue	140	130	130
Blue	100	93	93
Blue	72	68	70
Blue	60	53	53
Blue	45	41	42
Blue	35	30	30
Blue	25	22	23
Blue	15	14	14
Blue	10	9	10



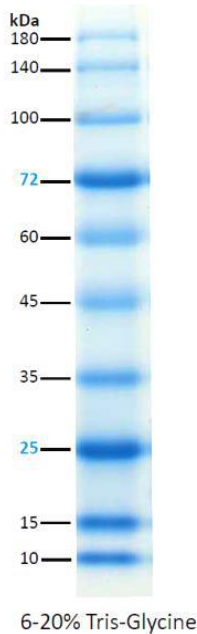
4-12% BIS-TRIS gel MES buffer



Deesae Technology

www.Deesae.com

DP Ladder240 Protein Marker



Note. The apparent molecular weight (kDa) of each protein has been determined by calibration against an unstained protein standard; supplemental data should be considered for more accurate adjustment in different electrophoresis conditions.



Deesae Technology

www.Deesae.com

Quality Control

Under suggested conditions, DP Ladder180 Protein Marker resolves 10 major bands in 15% or 4-20% Tris-Glycine Gel with Tris-Glycine buffer and after Western blotting to nitrocellulose membrane.